

General Principles

Abbreviations

C	Celebrant
MC	Master of Ceremonies
Th	Thurifer
AC	Acolyte
TB	Torchbearers

Reverences

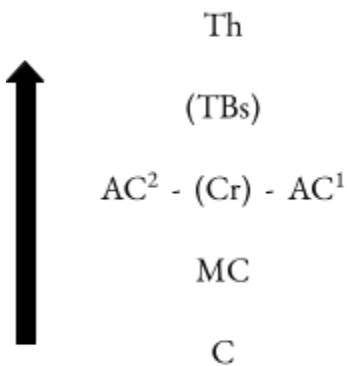
- Genuflections
 - Regardless of whether the Blessed Sacrament is reserved on/immediately behind the altar, servers will always genuflect to the altar except in the following cases:
 - You are carrying the cross or are an acolyte bearing a candle flanking the cross.
 - In this case, make a head bow.
 - You are outside of liturgy and the Blessed Sacrament is not reserved on or behind the altar.
 - Altar servers will never genuflect on the predella, in or out of Mass, the only exception being if he is assisting a priest in genuflecting (incensations, MC at the end of the Canon, etc.)
- Solita oscula
 - When the Celebrant hands you an object, kiss his hand, then the object; vice versa for when you hand something to him. This goes for the:
 - Biretta
 - Thurible
 - Incense spoon
 - Aspergillum
 - For handing the water and the wine to the Celebrant, kiss the handle of the cruet (without kissing the Celebrant's hand) before giving it to him and after receiving it back from him.

Hand Positions

If you are:	Then:
Standing with empty hands	Fold them at the breast
Standing and using one hand to hold something	Hold the object with your right hand, and rest your left hand flat just below your sternum.
Standing and using both hands to hold something	Use both hands to hold the object.
Sitting	Rest your hands with your fingertips touching the tops of your kneecaps

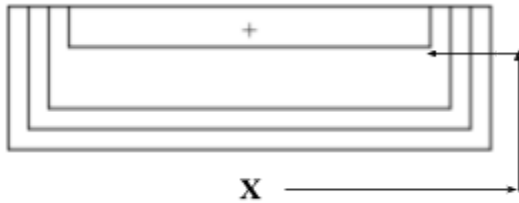
Processions

- Processions generally go in order of rank, from the lowest rank first to the highest rank.
 - The exception to this is that the Thurifer will go first despite being of a higher rank than the Acolytes, Crucifer, and Torchbearers.
 - The ranking goes as follows:
 - Celebrant
 - MC
 - Thurifer
 - Acolyte 1
 - Acolyte 2
 - Crucifer
 - Torchbearers
 - Consequently, processions will look as follows:

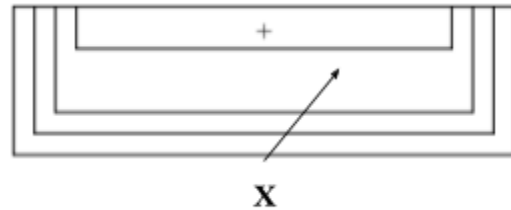


Ascending to the predella

If you're not carrying anything, go the long way.

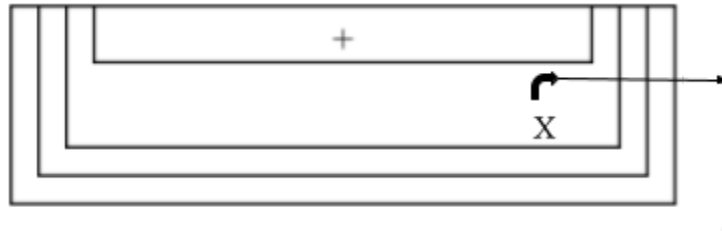


If you're carrying something, go the short way.



Descending from the predella

- When descending the long way, turn along with the altar, not against it.



- Exceptions to this are:

- For the MC when coming down with the Celebrant *per breviorum* after he recites the Gradual and Alleluia.
- When two people are walking side by side, in which case, you will turn inward toward each other.

- When descending the short way, turn inward.

